

Table tray, HD Balance

Also fits HD 500, 600 & 650 with adapted armrests.

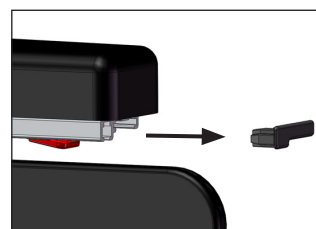
Assembly instructions

Page 1 (2)

Art. no: 69521, -22, -31, -32, -41, -42, -51, -52 and 12981, -82, -85, -86

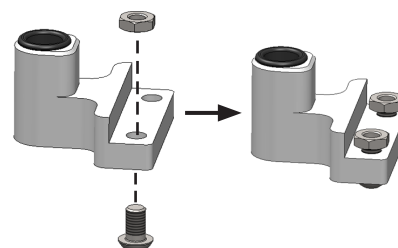
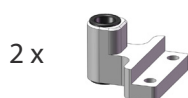
Assembly of the table mounts:

1.



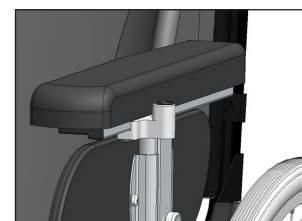
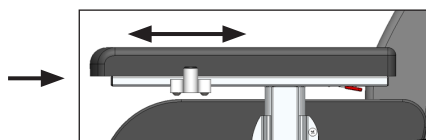
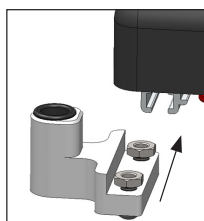
Pull out the **REAR** plastic endings from the armrest profile on each side of the wheelchair.

2.



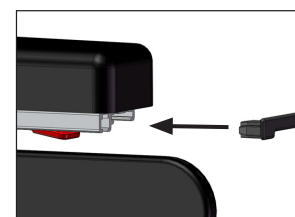
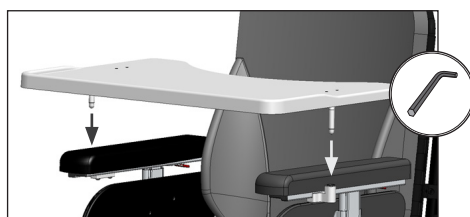
Fit the screws in the table mounts. Only secure them a few rounds.

3.



Fit the nuts, from the rear end, in the slot along the armrest profile. Fit one mount on each armrest. Move the mounts so that they sit in approximately the same location on both sides.

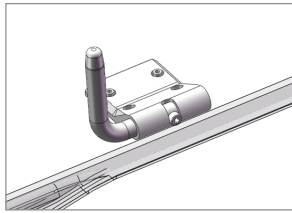
4.



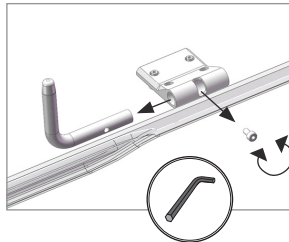
Fit the table tray in the holes on the mounts according to the picture. Position the tray, by moving the mounts along the slot in the armrest profile, to the desired position and tighten the screws. Put back the plastic endings on the armrest profile. The table tray is ready for use!
See opposite side for further adjustment instructions.

Further adjustments:

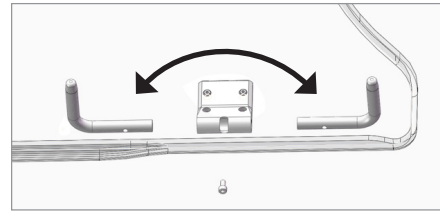
1.



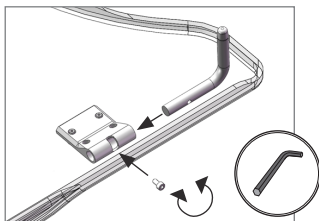
2.



3.



4.



By switching side for the taps, according to the pictures above, the position of the table tray will change 85mm in depth.